

**Model :D-1091**



**Model: D1092**

## **Square Stainless Steel Towel Rails**

**Models Available :**

**D-1091--Square 3 Bars**

**D-1092--Square 6 Bars**

**OPERATING INSTRUCTIONS**

## **SAFETY INFORMATION**

When using any electrical appliance ,basic safety precautions should always be observed .

### **READ THESE INSTRUCTIONS CAREFULLY .**

Keep them in handy for future reference .

- This appliance is intended to warm and dry towels and therefore is hot to the touch .
  - When used by or near young children or infirm persons ,close supervision is necessary .Young children should be supervised to ensure that they do not play with the appliance .
  - Any rise in ambient temperature is directly reflected in the appliance, and as a result of this ,the appliance will feel hotter to the touch during warmer periods.Also the insulation effect of towels will cause the operation temperature to increase slightly .
  - The appliance is to be installed so that switches and other controls cannot be touched by a person in the bath or shower .
  - DO NOT use this appliance for any purpose other than its intended use .
  - To avoid a hazard this heated towel rail MUST NOT be used to carry towels or any other articles that have been in contact with oil, petroleum based products or dry cleaning fluids .
  - Use this appliance only with the voltage specified on the rating label, or elsewhere in these instructions.
  - Regulations require that electrical work be carried out only by authorised persons .For your own safety and that of others ensure this is done .
  - DO NOT immerse in any liquid .
  - For service contact your nearest Authorised Service Agent .
- WARNING :In order to avoid a hazard for young children ,this appliance must be installed so that the bottom rail is at least 600mm above the floor .**

## **INSTALLATION**

### **Mounting towel rail :**

Please note: We advise that the towel rail should be installed by a professional .

**Please read the safety information on the previous page carefully before mounting .**

**1**,First ,confirm which method of cord entry your bought from shop ,exposed or concealed wiring. Then connect the "Non Flex " leg to the bottom of the towel rails that will not house the electric flex (After removing the fixing barrel & making sure the grub screw will face the floor).Also before attaching the leg, make sure the cap that covers the electrical connection/ wires is in place .

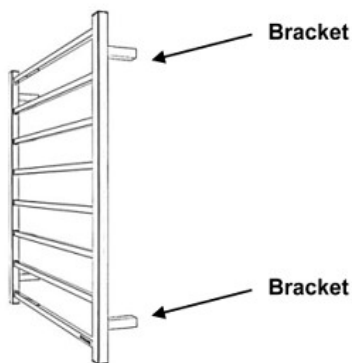
**2** ,Select desired spot to mount towel rail with at least 300mm clearance from all permanent objects in surrounding area and 600mm above the floor .The ladder towel rail should be installed in accordance to local Australia governing regulations . The heated towel rail can only be mounted 1 way .Your towel rail is mounted by brackets with a single screw on each of the 4 brackets at the indicated spots in

illustration below .Be sure to cut off excess flex/cord on the side of the towel rail that is not connected to the power supply .

## SPECIFICATIONS

Model	Size -W*H*D (mm)	Power (W)	Switch	Vertical distance(mm)	Horizontal distance (mm)
D-1091	500*280*100	42	Yes	200	462
D-1092	500*640*100	88	No	560	462
<b>Material</b>	<b>Stainless Steel</b>				
<b>Power Supply</b>	<b>240 Volts AC,50Hz</b>				

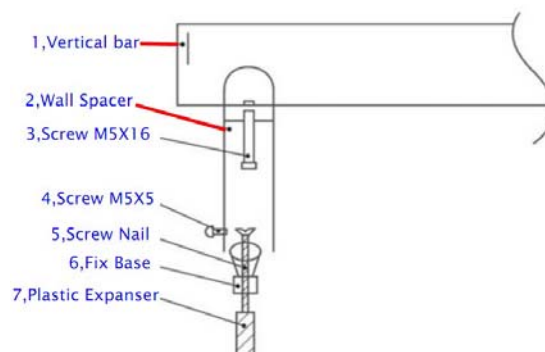
Side View of Ladder Towel Rail



Top View of Ladder Towel Rail



## WALL SPACER INSTALLATION



3, This box contains a set of 4 legs for your heated towel rail .

A) For a **concealed cord** entry you require the following 4 legs :



Example of finish

Typically a concealed cord entry is used for a new home or new bathroom installation where no existing outlet is present .

**OR**

B) For an **exposed cord** entry you require the following 4 legs .



Typically an exposed cord entry is used for retro-fit installations where an existing permanent connection outlet is already wired .

### **ELECTRICAL INSTALLTION**

This appliance **MUST** be installed in accordance with the relevant wiring rules and regulations and in particular those regulations which cover installation of appliances and accessories in damp situations such as bathrooms ,shower, laundries and other areas with fixed water containers .It is to be fitted in accordance with applicable . Australian /New Zealand Standard (AS/NZS).

The means for disconnection must be incorporated in the fixed wiring in accordance with the wiring rules .Special purpose tools are required for the replacement of the power supply cord and element .Contact an Authorized Service Agent for service .

### **CARE AND CLEANING**

Surface rust can occur on stainless steel over time . To avoid this heated towel rail is best wiped down from time to time with a damp cloth and a stainless steel cleaner.  
DO NOT USE ANY ABRASIVE OR CORROSIVE CLEANERS.

**BAR**  
Barben  
Architectural  
Hardware

**BIEN**

**Barben Industries**

**Address: 23 Container Street, Tingalpa, QLD, 4173**

**Phone : 07 3890 8558 Fax: 07 3890 8559**

**Email [info@barben.com.au](mailto:info@barben.com.au)**